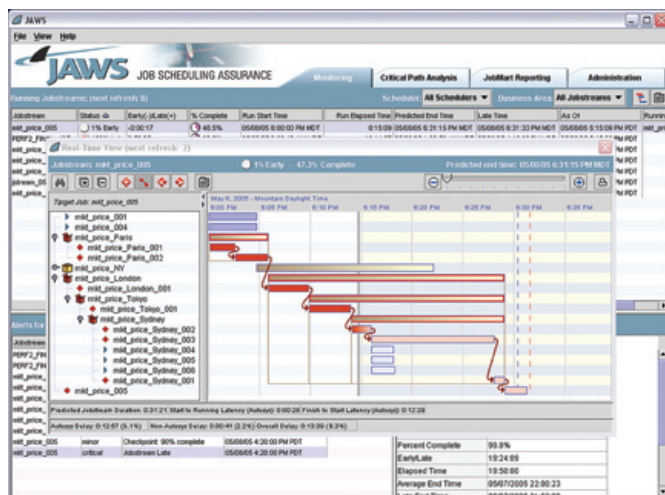


**ONLY JAWS LETS YOU:**

- Provide assurance for meeting service level agreements (SLAs)
- Predict and alert users to potential problems
- Monitor the real-time progress of any critical jobstream
- View, analyze and optimize isolated jobstreams
- Pinpoint delays in your batch schedules
- Create business views of critical job processing
- Provide concrete documentation for managers and customers

# Analyze. Visualize. Predict. Control.

JAWS is the first—and only—job scheduling assurance platform to provide true PREDICTIVE capabilities in the job scheduling environment. Predicting problems before they occur helps to ensure that you **meet your service level agreements (SLAs)**.



*JAWS monitors in real-time the progress of entire jobstreams, alerting you if any are predicted to run late. This Gantt chart view (with the critical path jobs shown in red) allows you to easily identify runtimes as well as critical path.*

Only JAWS lets you instantly and easily analyze months of historical data to optimize Unicenter® AutoSys® job management efficiency. The information is stored and maintained in a separate JAWS database called JobMart™. It is this data store of current and past run data that enables JAWS to build and isolate jobstreams, see the critical paths as well as **generate real-time predictions** of jobstream completion. Plus, JobMart's historical database is completely open, enabling you to generate custom reports in addition to the reports included with JAWS.

JAWS is completely non-intrusive. It uses read-only access to poll the Unicenter AutoSys database so it won't encumber system performance in any way.

## Powerful Job Scheduling Assurance for Unicenter® AutoSys®

JAWS provides the knowledge needed to eliminate costly scheduling errors that can materially harm your business. In fact, JAWS will pay for itself quickly by helping you avoid:

- Defaulting on SLAs that can result in economic penalties

- Scheduling delays that can carry regulatory fines
- Loss of faith and confidence by your customers
- Missed windows that force you to lose valuable income
- Time consuming post-mortem analysis of nightly batch processing



## TECHNICAL SPECIFICATIONS

JAWS is a J2EE™ application, allowing users on virtually any platform the ability to monitor and analyze jobstreams

JAWS can be deployed in both Windows® Server and Unix® environments

JAWS is compliant with all major event consoles such as HP OpenView, CA® Unicenter®, IBM® Tivoli®, and Micromuse® Netcool®/OMNIBus™.

## TECHNICAL REQUIREMENTS

JAWS ships with all required components that can be used with customer's selection of database:

- SQL Server™
- Oracle®
- Sybase®

## SCHEDULE A DEMO TODAY!

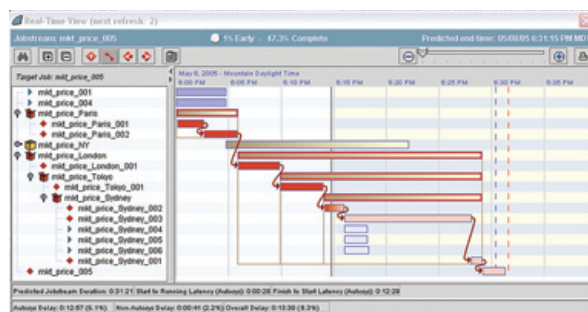
JAWS is like nothing you've ever experienced, and it will literally change your professional life. Take a few minutes for a quick demo. It's a small investment today that will yield great dividends tomorrow and in the years to come. To schedule an online demo, email [demo@termalabs.com](mailto:demo@termalabs.com) or call 303-417-1718 x208

## See what's happening. See what's going to happen.

Jobstreams can vary daily, and affect critical jobs in a myriad of ways. Without JAWS, you have no clear way of knowing if jobstreams are running on time, which jobs are impacting critical jobs and whether or not these critical jobs will ultimately complete on time.

**But with JAWS, you'll have a time-based view into all of your jobstreams, affording you a continuous assessment of progress.** It lets you quickly identify critical jobstreams, and it tells you when that jobstream is projected to finish. If there's a problem that can impact the timely completion of your critical processing, JAWS automatically sends an alert.

JAWS then lets you identify and isolate only those upstream jobs that are affecting your critical job. For the first time, you can actually focus on the problem and analyze it visually, independent of other jobs and jobstreams.



*Only JAWS lets you "see the forest for the trees." With a single mouse click, JAWS isolates and shows you all the jobs that could possibly impact the successful execution of a critical job.*

## Automatic Alerts

Once a target job has been identified as critical, JAWS sends an alert notification—via SNMP or directly to the JAWS console—in response to five different scenarios:

- When a critical job is predicted to run late
- When a critical job is not predicted to run
- When a certain percentage of a critical jobstream is complete
- When a critical job has completed
- When a problem has been corrected and a critical job is back on track

Instead of "babysitting" critical jobs, you can trust JAWS alerts to inform you if and when there is a problem.

## The insight needed to optimize jobstreams

Unicenter AutoSys users know that maintaining a large volume of historical data degrades system performance. For most users, archived data is in no condition to help you analyze past jobstream performance in an efficient manner.

With JAWS, historical data is maintained in JobMart. Information for any date is available at the click of a button. In fact, you'll be able to use historical data for analysis the first day you begin using JAWS!

Useful reporting enables you to quickly identify latency and actually understand the "behavior" of isolated jobstreams. You'll be able to conduct effective postmortems to easily identify the source of any problem.

## Want to know more?

Call us at 303.417.1718 or visit our website at [www.termalabs.com](http://www.termalabs.com).

